



SLIDING DOOR TECHNOLOGY 2008

Innovative solutions, high quality details

KLEIN is a leading company in sliding door mechanisms for construction and decoration projects.

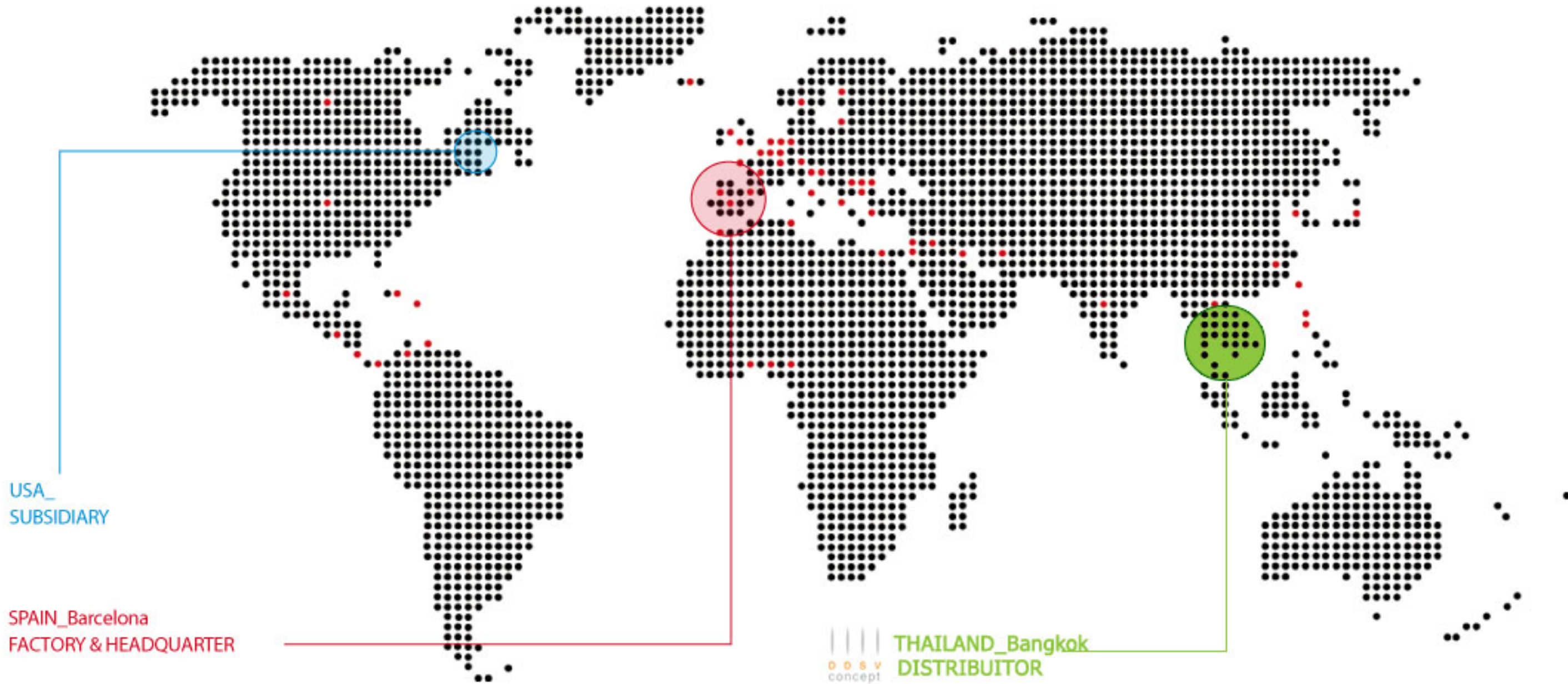
This is the result of maintaining a philosophy of maximum quality, as certified by TÜV ISO 9001:2000, and an involvement in Research

and Development over the 75 years that the company has been in existence.

With high quality European manufacture, our products are exported to 55 different countries worldwide, providing five different divisions: Furniture, Industrial, Interior Design,

Glass and External Enclosures.

At present, we are opening a market in USA by introducing some of our Glass and Interior Design products...



USA_ SUBSIDIARY

SPAIN_Barcelona FACTORY & HEADQUARTER

DOSV concept THAILAND_Bangkok DISTRIBUTOR

DISTRIBUTION: SAUDI ARABIA + CAMEROON + IVORY COAST + EGYPT + PHILIPPINES + GREAT BRITAIN + HONG KONG + INDIA + IRAN + ISRAEL + JAPAN + KUWAIT + LEBANON + MOROCCO + NIGERIA + KOREA + TAIWAN + THAILAND + TUNISIA + CANADA + COSTA RICA + EL SALVADOR + UNITED STATES + MARTINIQUE + MEXICO + PANAMA + PUERTO RICO - U.S.A + DOMINICAN REPUBLIC + VENEZUELA + GERMANY + AUSTRIA + BELGIUM + BULGARIA + CYPRUS + DENMARK + SLOVENIA + ESTONIA + FINLAND + GREECE + NETHERLANDS + HUNGARY + IRELAND + ICELAND + ITALY + LETTONIA + LITHUANIA + POLAND + CZECH REPUBLIC + ROMANIA + SERBIA + MONTENEGRO + SPAIN + SWEDEN + FRANCE + PRINCIPALITY OF ANDORRA + PORTUGAL

GLASS

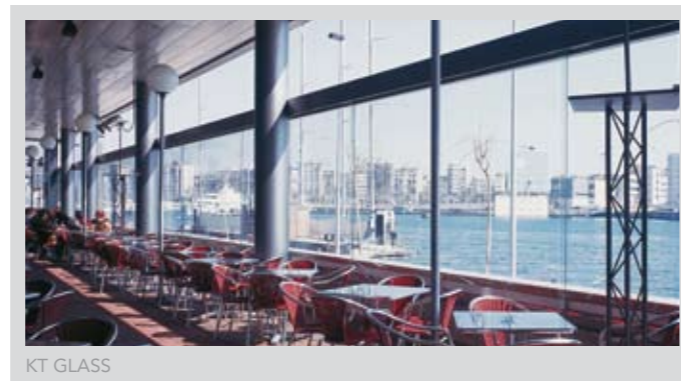
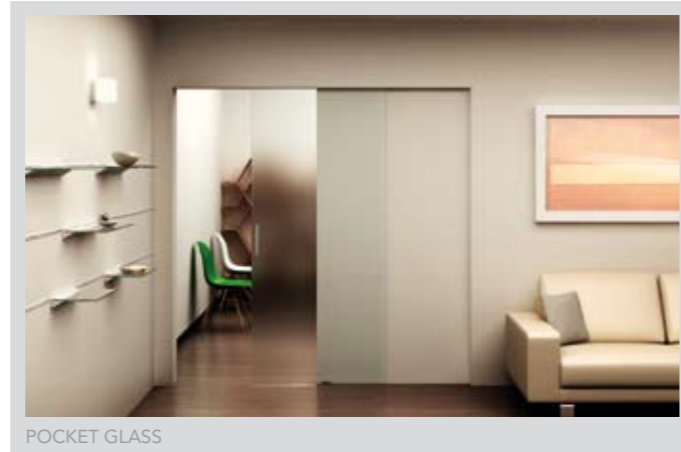
UNIKGLASS
POCKET GLASS
KT GLASS
KT GLASS EXPERT

RECESSED
HARDWARE

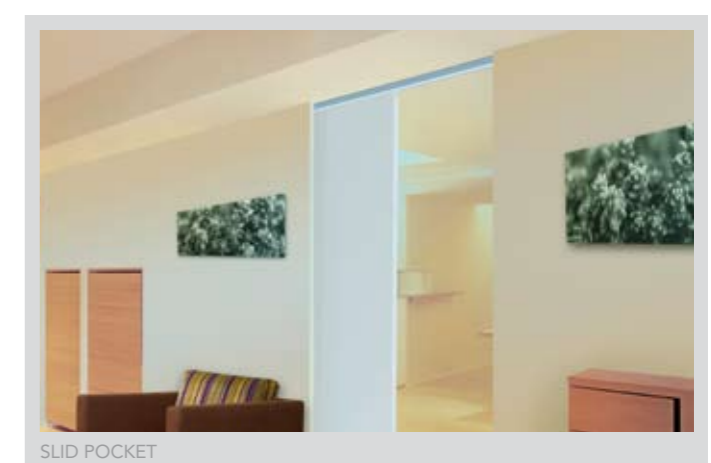
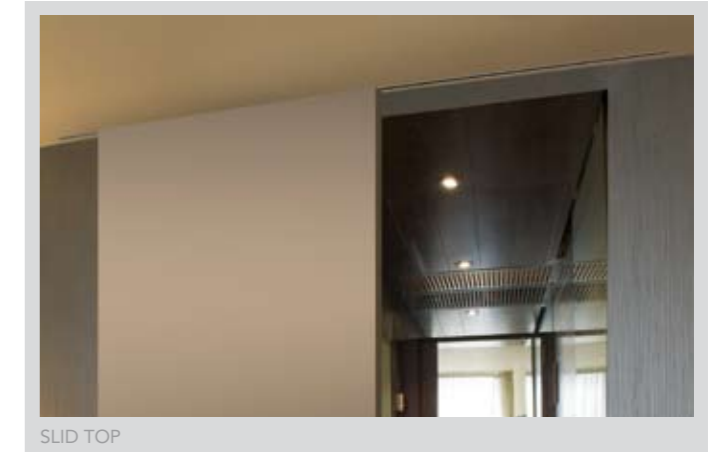
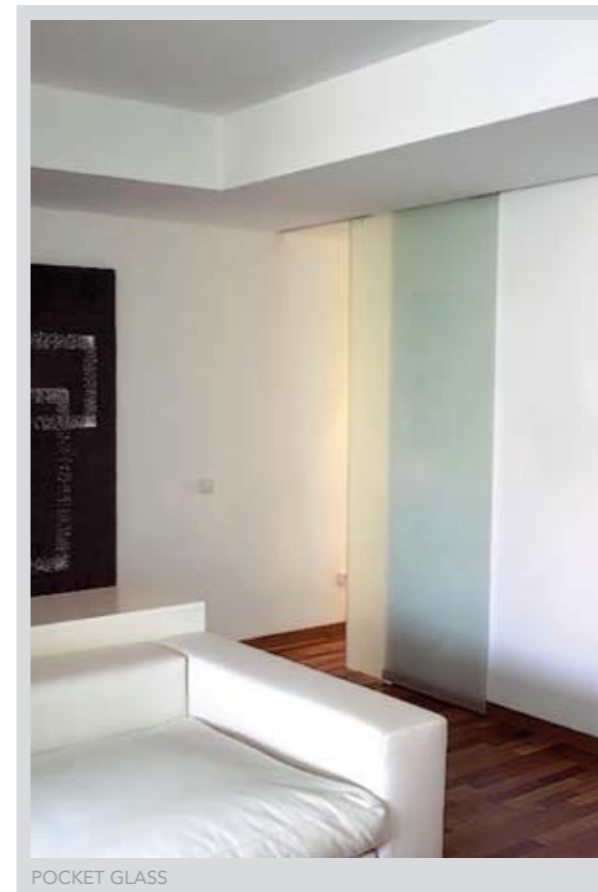
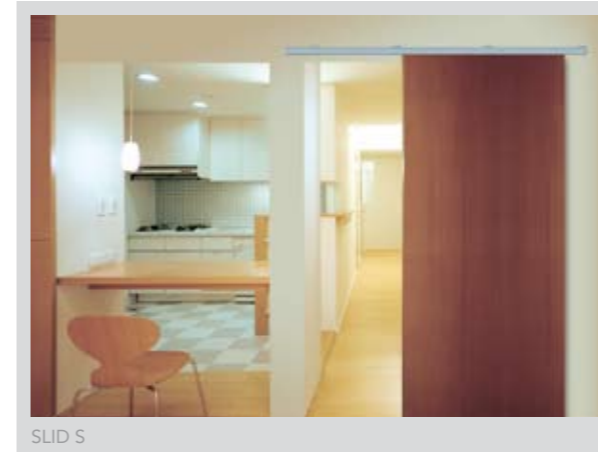
NO GLASS
DRILLING
NECESSARY

METAL OR WOOD

SLID S & RETRAC
SLID TOP
SLID POCKET



UNIKGLASS 	198 lbs	X= 1 9/16" Y= 2 7/8"	3/8"-1/2"
POCKET GLASS 	276 lbs	X= 1 3/8" Y= 1 11/16"	3/8"-1/2"
KT GLASS 	176 lbs	X= 7/8" Y= 1 3/16"	5/16"-3/8"
KT GLASS EXPERT 	397 lbs	X= 1 11/16" Y= 2 9/16"	3/8"-1/2"
	MAX WEIGHT	TRACK	GLASS THICK



SLID S & RETRAC 	198 lbs 287 lbs	X= 1 5/16" Y= 1 3/4" X= 1 3/8" Y= 1 3/4"	1 3/8"-1 3/4"
SLID TOP 	198-287 lbs	X= 2 3/8" Y= 1 3/4"	1 3/8"-1 3/4"
SLID POCKET 	198 lbs	X= 1 5/16" Y= 1 3/4"	1 3/8"-1 3/4"
	MAX WEIGHT	TRACK	GLASS THICK

One sliding door systems

GLASS

ROLL GLASS

LESS THAN
3/8"
BETWEEN
PANELS



ROLL GLASS 90



ROLL GLASS 135



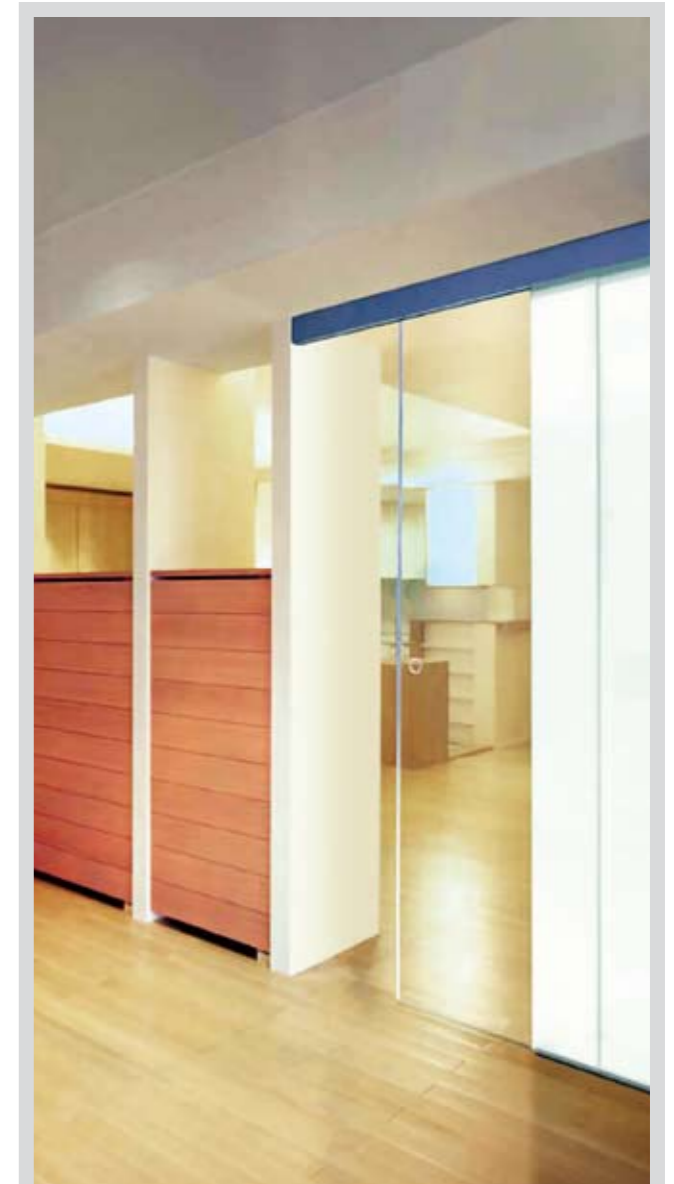
ROLL GLASS 135





ROLL GLASS 175



ROLL GLASS 175



ROLL GLASS 135

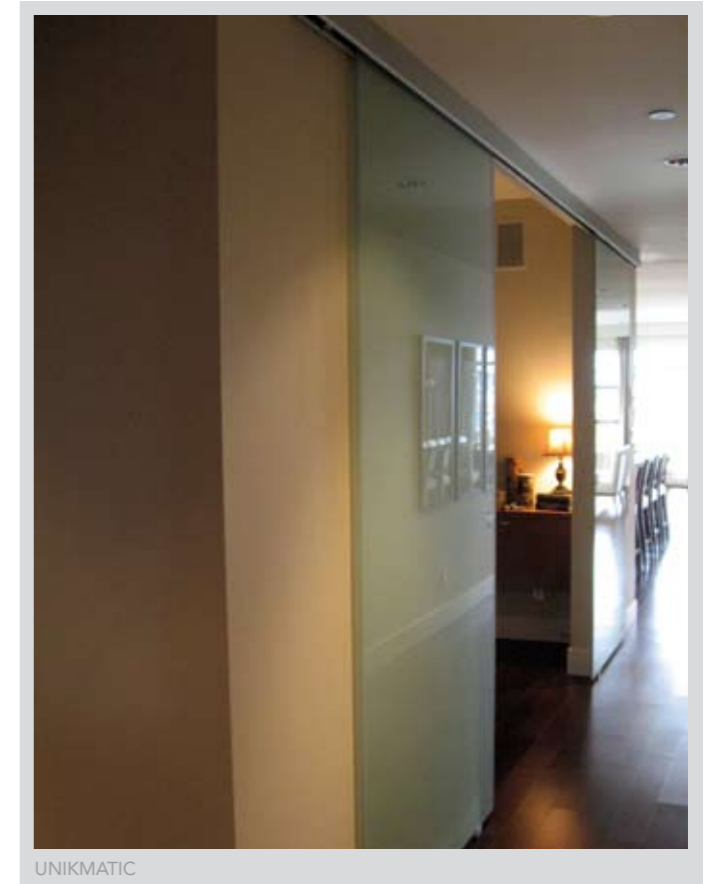
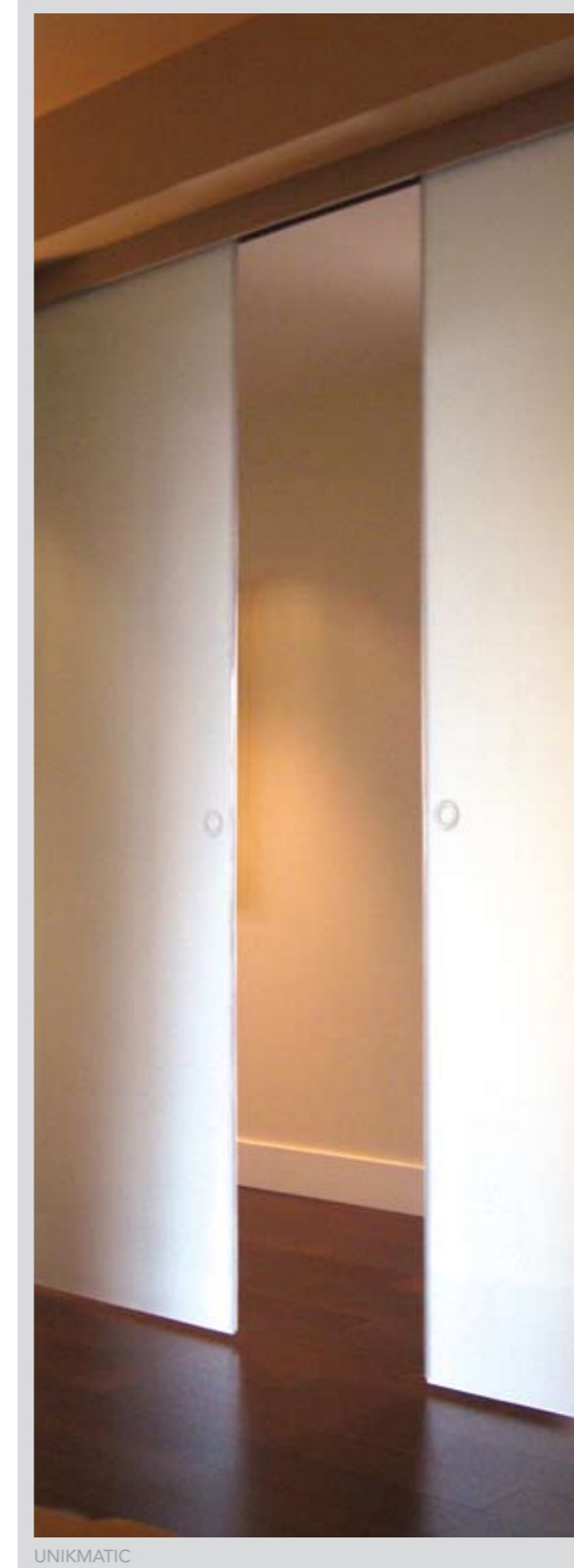
ROLL GLASS 90	198 lbs	 X= 1 7/8" Y= 3 1/8"	3/8"-1/2"	YES	SILVER MARINER ALUMINIUM Anodized AA 20 microns (ISO 7599)
ROLL GLASS 135	298 lbs	 X= 2 1/16" Y= 3 3/4"	3/8"-1/2"	YES or NO	SILVER MARINER ALUMINIUM Anodized AA 20 microns (ISO 7599)
ROLL GLASS 175	385 lbs	 X= 2 5/16" Y= 3 3/4"	3/8"-1/2"	YES or NO	SILVER MARINER ALUMINIUM Anodized AA 20 microns (ISO 7599)
	MAX WEIGHT	TRACK	GLASS THICK	FASCIA	FINISHING

Fixed & sliding door systems

GLASS

- UNIKMATIC
- ROLMATIC
- UNIKMATIC CORNER
- ROLMATIC CORNER

**MANUAL
SIMULTANEOUS
OPENING**



UNIKMATIC	198 lbs	X= 2 1/8" Y= 3 3/8"	3/8"
ROLMATIC	198 lbs	X= 2 7/16" Y= 4 1/8"	3/8"
MAX WEIGHT		TRACK	GLASS THICK

Synchronized door systems

GLASS

- UNIKMATIC
- ROLMATIC
- UNIKMATIC CORNER
- ROLMATIC CORNER

MANUAL
SIMULTANEOUS
OPENING

EXCLUSIVE



ROLMATIC CORNER

EXCLUSIVE



UNIKMATIC CORNER

Synchronized door systems

KLEIN - THAILAND
www.dds-v-concept.com

